

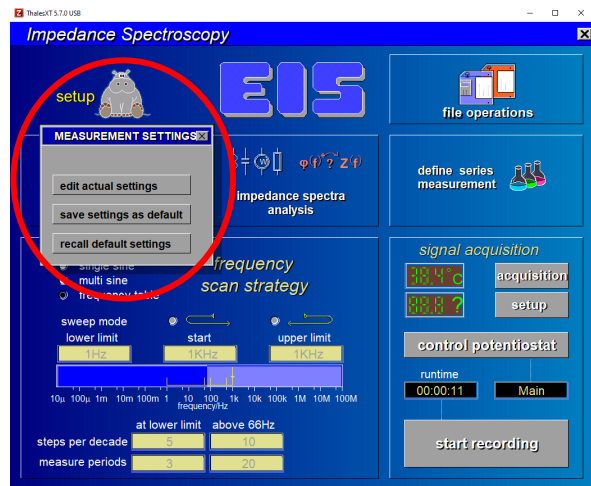
Setting up Shielded Cable Set

Connect the “Shielded Cable Set” to the I-probe and E-probe connections at the front panel of the ZENNIUM series potentiostat. Make sure that the BNC connectors at the front panel are left unconnected.

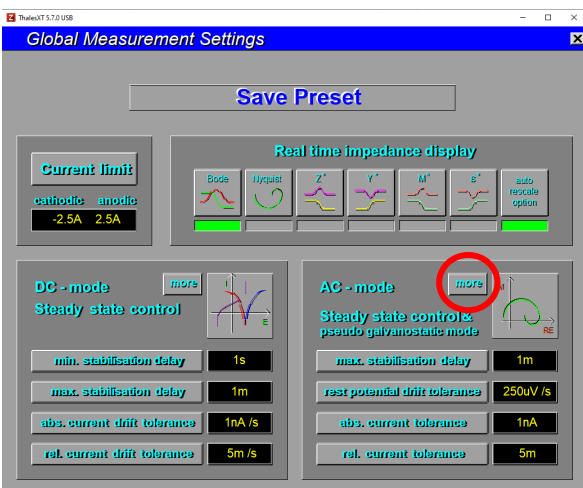
To properly set up the “Shielded Cable Set” for measurements, its capacitance value must be provided in the Thales software. For providing the capacitance value, follow the steps provided below.



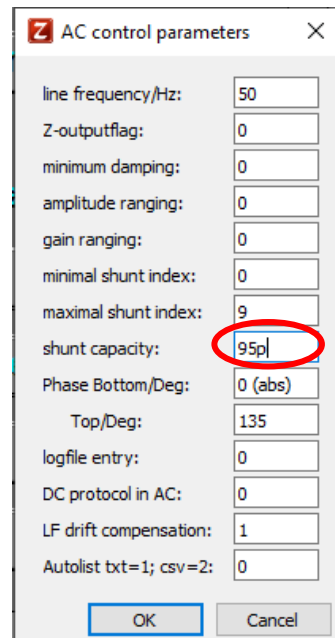
1. Click on **EIS**



2. Click on **setup** → **edit actual settings**



3. Click on **more** in AC- mode



4. Enter **shunt capacity** = 95 p (95 pico-Farad)
Click **OK**

!!!Now the “Shielded Cable Set” is ready to use!!!